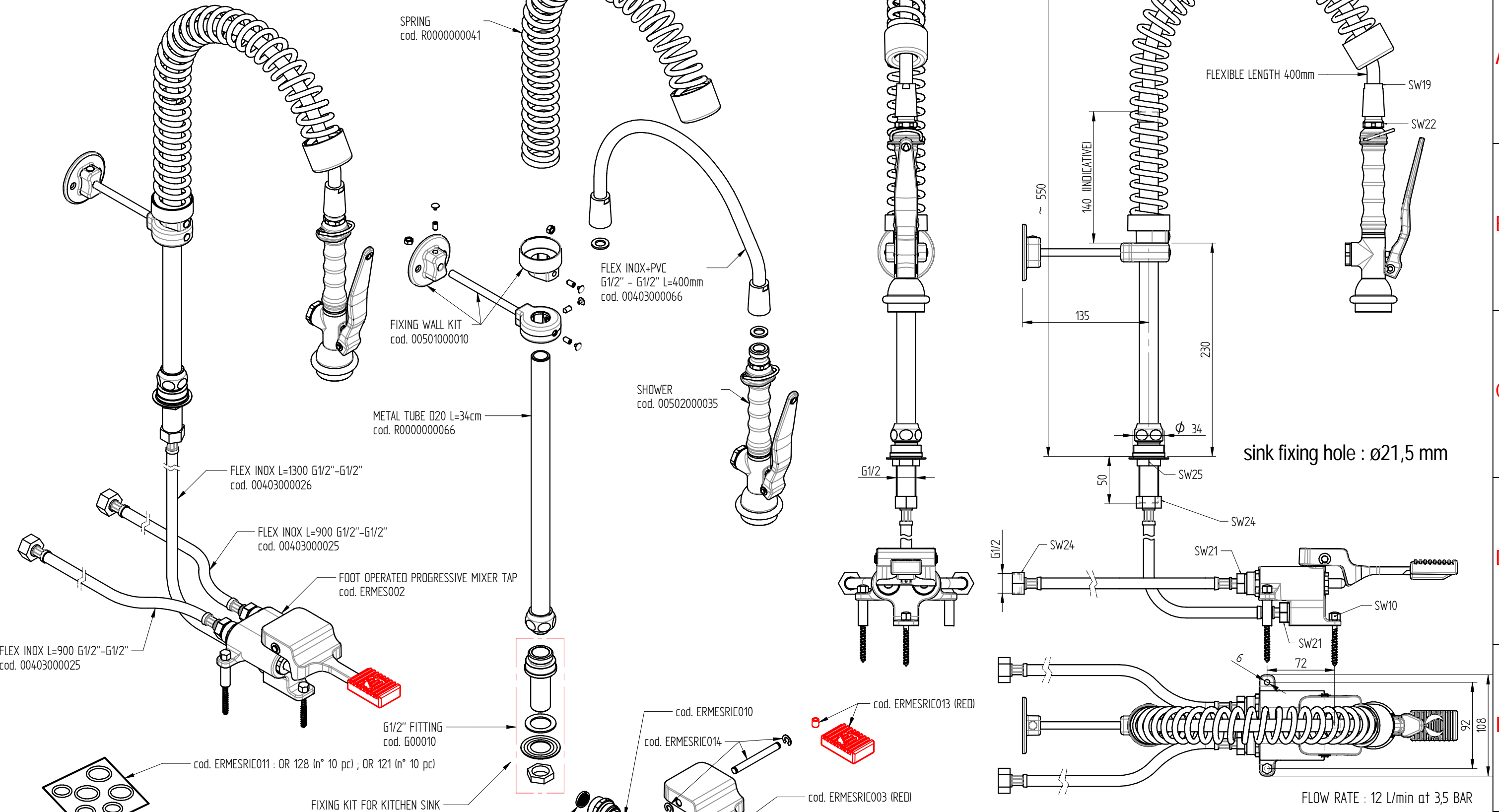


TECHNICAL SPECIFICATIONS :

MINIMUM / MAXIMUM OPERATING TEMPERATURE : 5 ÷ 70°C
 MINIMUM / MAXIMUM OPERATING PRESSURE : 0,5 ÷ 7 Bar
 RECOMMENDED : 3 ÷ 5 Bar



WARNINGS :

- For water supply only
- Suitable for indoor use
- Do not use toxic or abrasive products for the tap cleaning
- Install stop valve with filter (recommended) for maintenance operations
- Install filter gaskets (supplied) in the supply line
- Clean the pipes from debris, by to flow the water, before connecting the tap to the supply line
- Installation for release to specialized personnel

Shares without tolerance according to standard UNI-EN-22768-1-m		DESCRIPTION	CODE
SIZE		KIT FOOT OPERATED PROGRESSIVE MIXER WITH PRE-RINSE UNIT MINI VERSION	ERMES002/MINI112K
A3	European Projection		WEIGHT
DATE	SCALE		4,34 Kg
05-05-2022	1:4		
DRAWN	PICCOLO M.		
VALIDATE	PICCOLO M.	DESIGN AND TECHNOLOGICAL RESEARCH FOR WATER	
VIA DELL'ARTIGIANO 8/F-8-G , 31050 MONASTIER di TREVISO (TV) tel: 0422 842157 - fax: 0422 708978			
DONE WITH DESIGN CAD - PROHIBITED THE CHANGES MANUAL			

Rev. 01