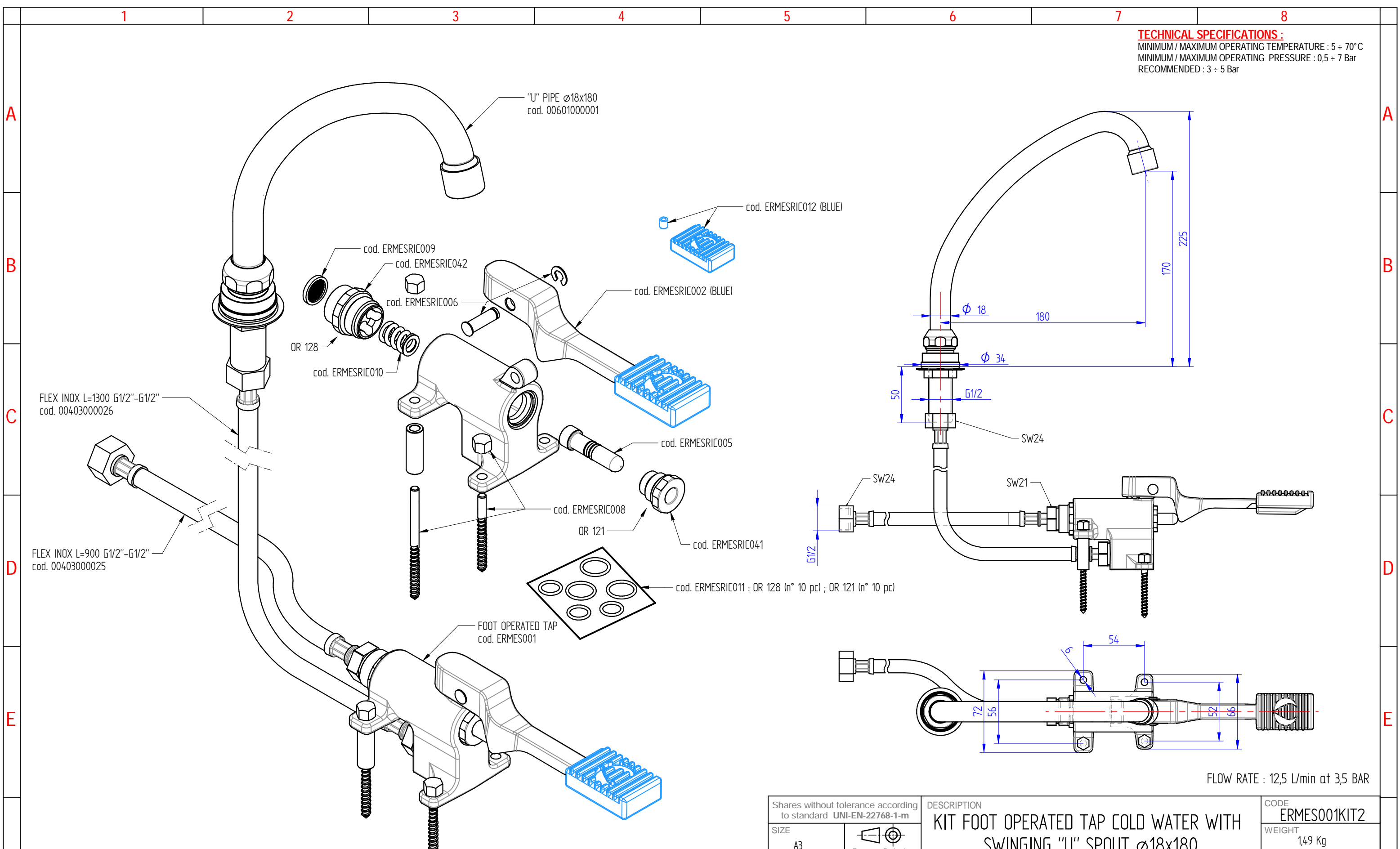


**TECHNICAL SPECIFICATIONS :**  
 MINIMUM / MAXIMUM OPERATING TEMPERATURE : 5 ÷ 70°C  
 MINIMUM / MAXIMUM OPERATING PRESSURE : 0,5 ÷ 7 Bar  
 RECOMMENDED : 3 ÷ 5 Bar



FLOW RATE : 12,5 L/min at 3,5 BAR



- WARNINGS :**
- For water supply only
  - Suitable for indoor use
  - Do not use toxic or abrasive products for the tap cleaning
  - Install stop valve with filter (recommended) for maintenance operations
  - Install filter gaskets (supplied) in the supply line
  - Clean the pipes from debris, by to flow the water, before connecting the tap to the supply line
  - Installation for release to specialized personnel

Shares without tolerance according to standard UNI-EN-22768-1-m		DESCRIPTION	CODE
SIZE	European Projection	KIT FOOT OPERATED TAP COLD WATER WITH SWINGING "U" SPOUT $\phi$ 18x180	ERMES001KIT2
A3			WEIGHT
DATE	SCALE		1,49 Kg
18-01-2019	1:3		
DRAWN		 <b>MONOLITH</b> DESIGN AND TECHNOLOGICAL RESEARCH FOR WATER	
PICCOLO M.			
VALIDATE		VIA DELL'ARTIGIANO 8/F-8-G, 31050 MONASTIER di TREVISO (TV) tel: 0422 842157 - fax: 0422 708978	
PICCOLO M.		DONE WITH DESIGN CAD - PROHIBITED THE CHANGES MANUAL	